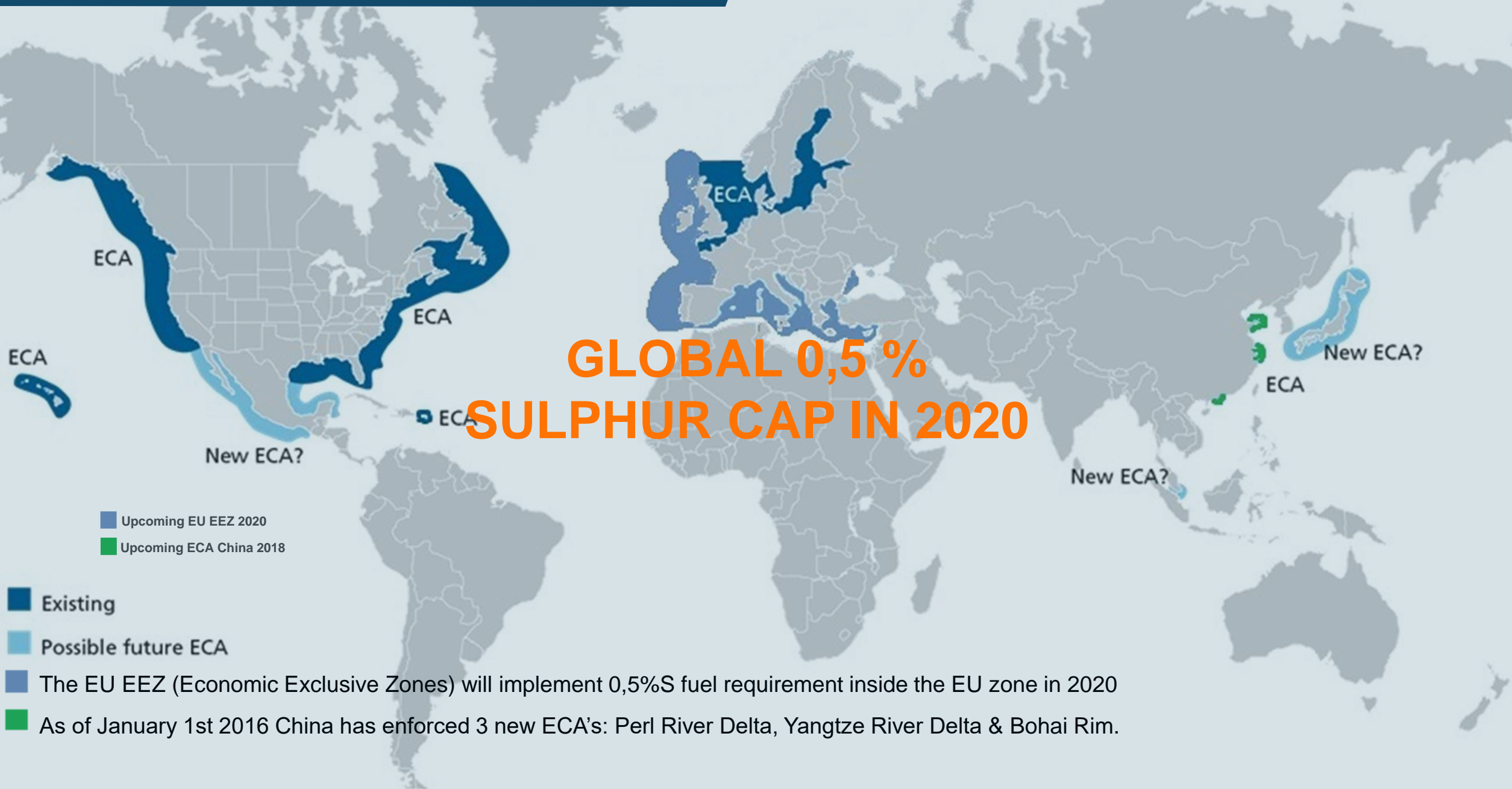


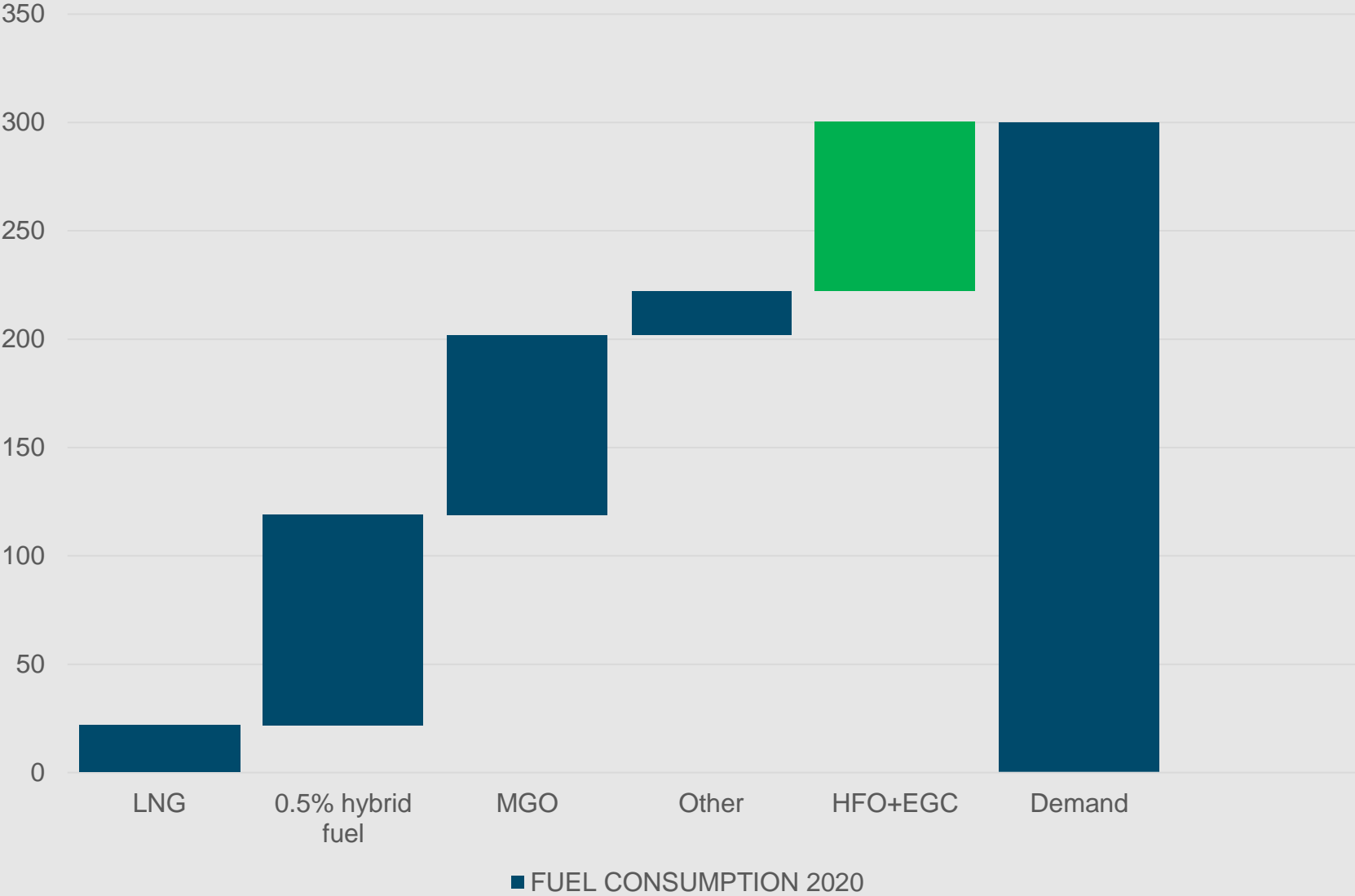
Market activity and achievement of Wärtsilä SOx Scrubber

Stian Aakre
General Manager, Exhaust Treatment

November 2018

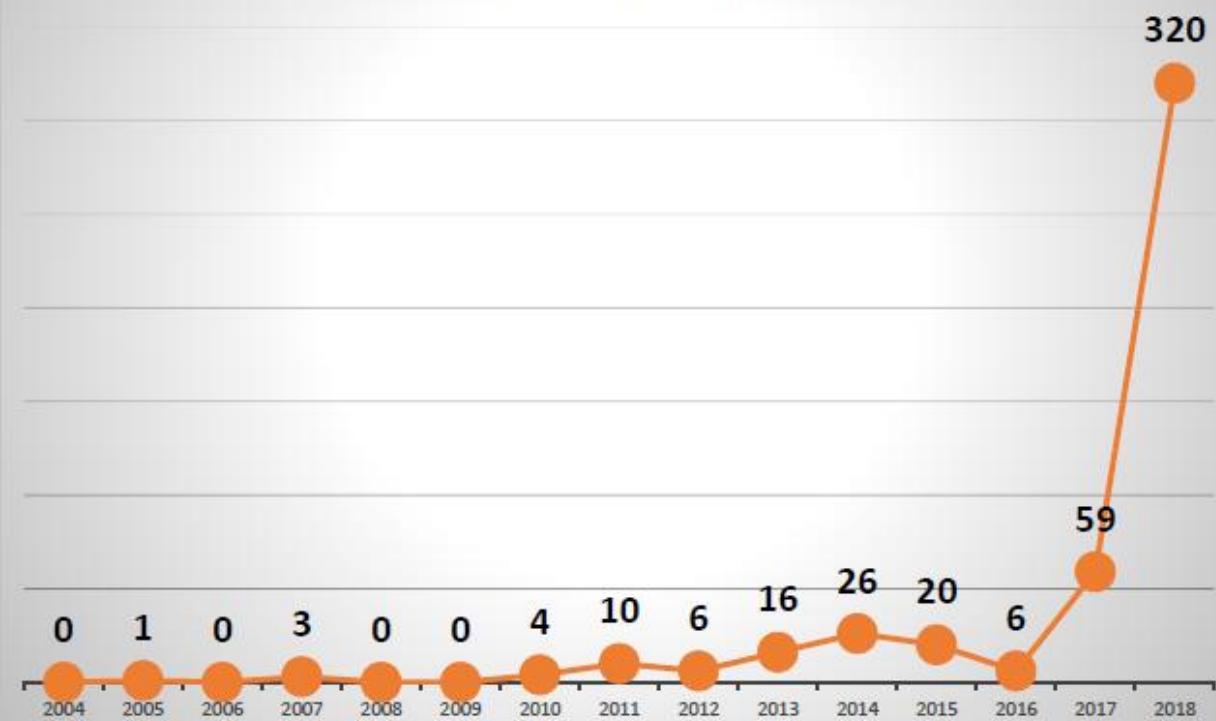




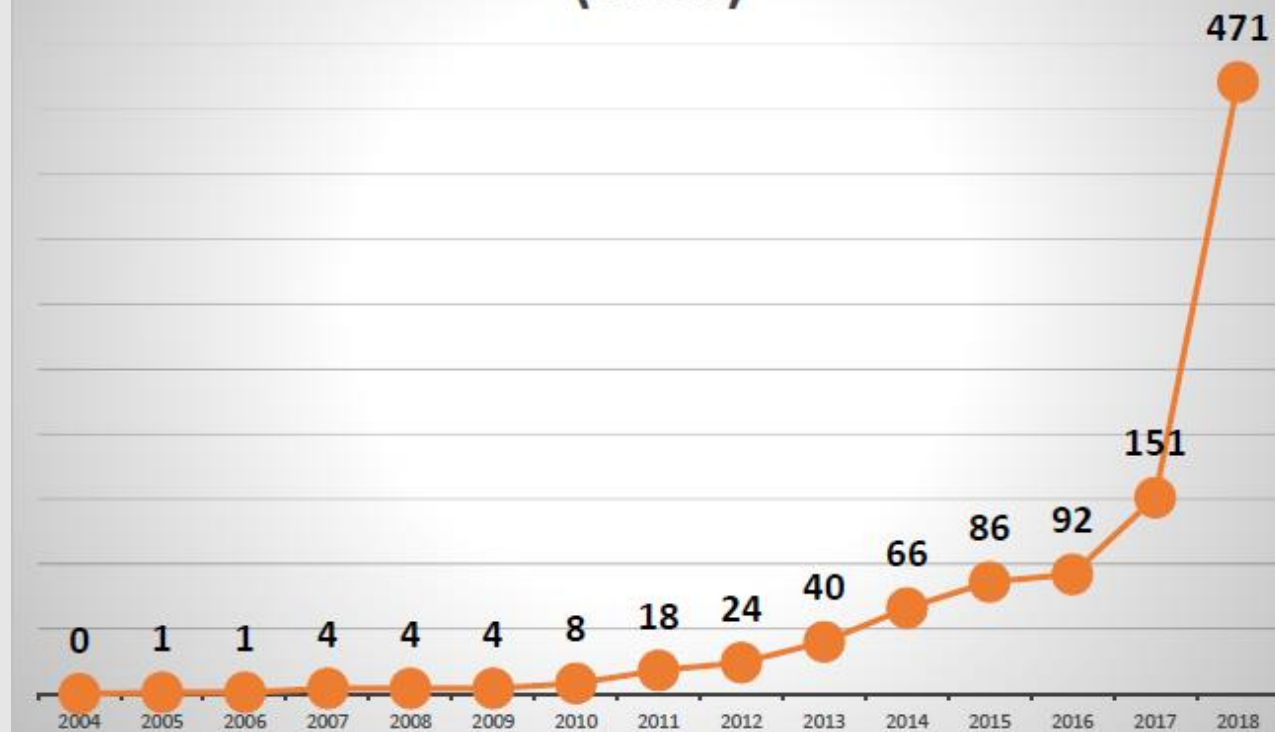


Market activity

Signed contracts/vessels (Per year)

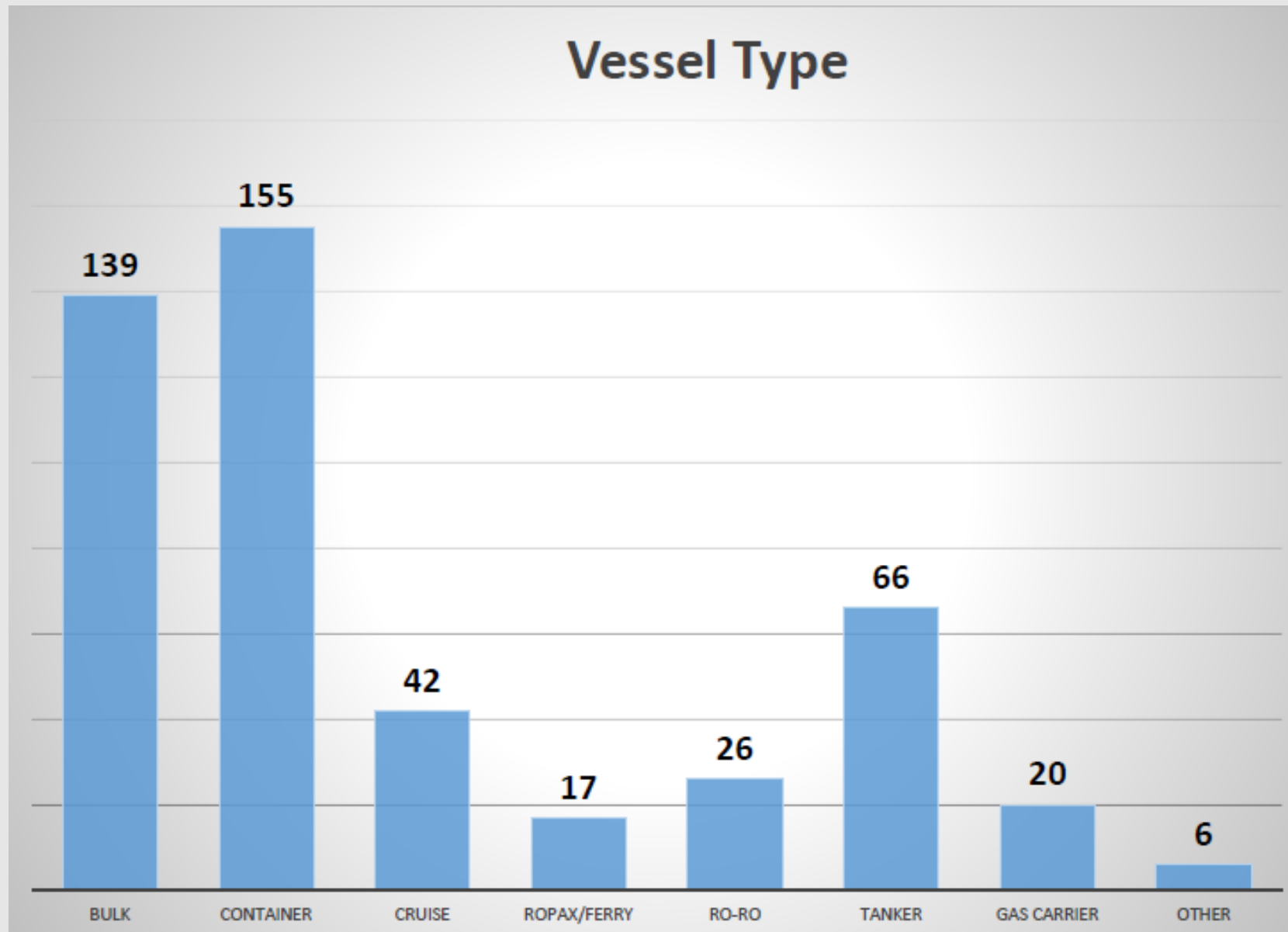


Signed contracts/vessels (Total)



As of Sep. 2018

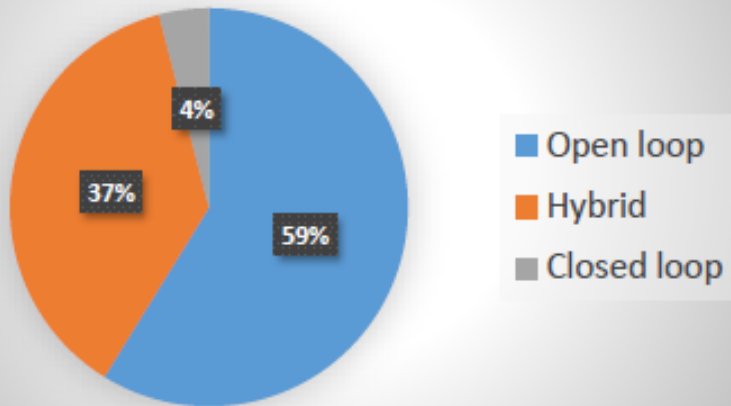
Market activity



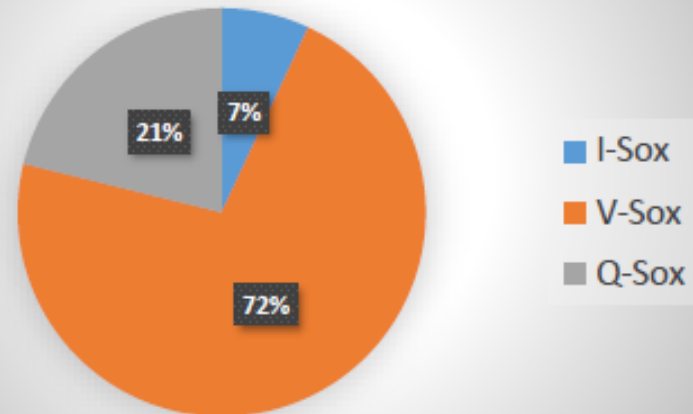
As of Sep. 2018

Market activity

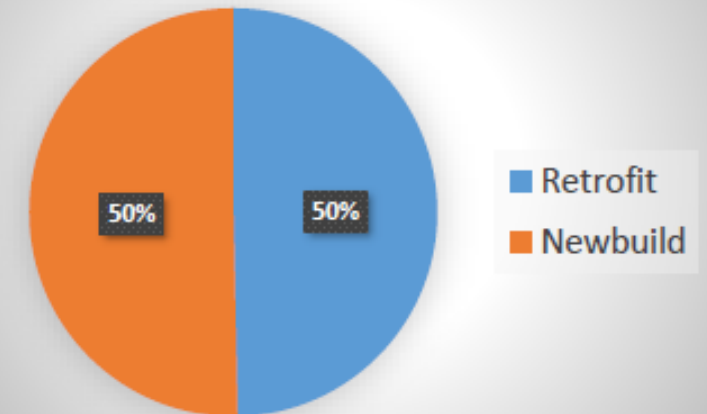
System Type



Scrubber Type



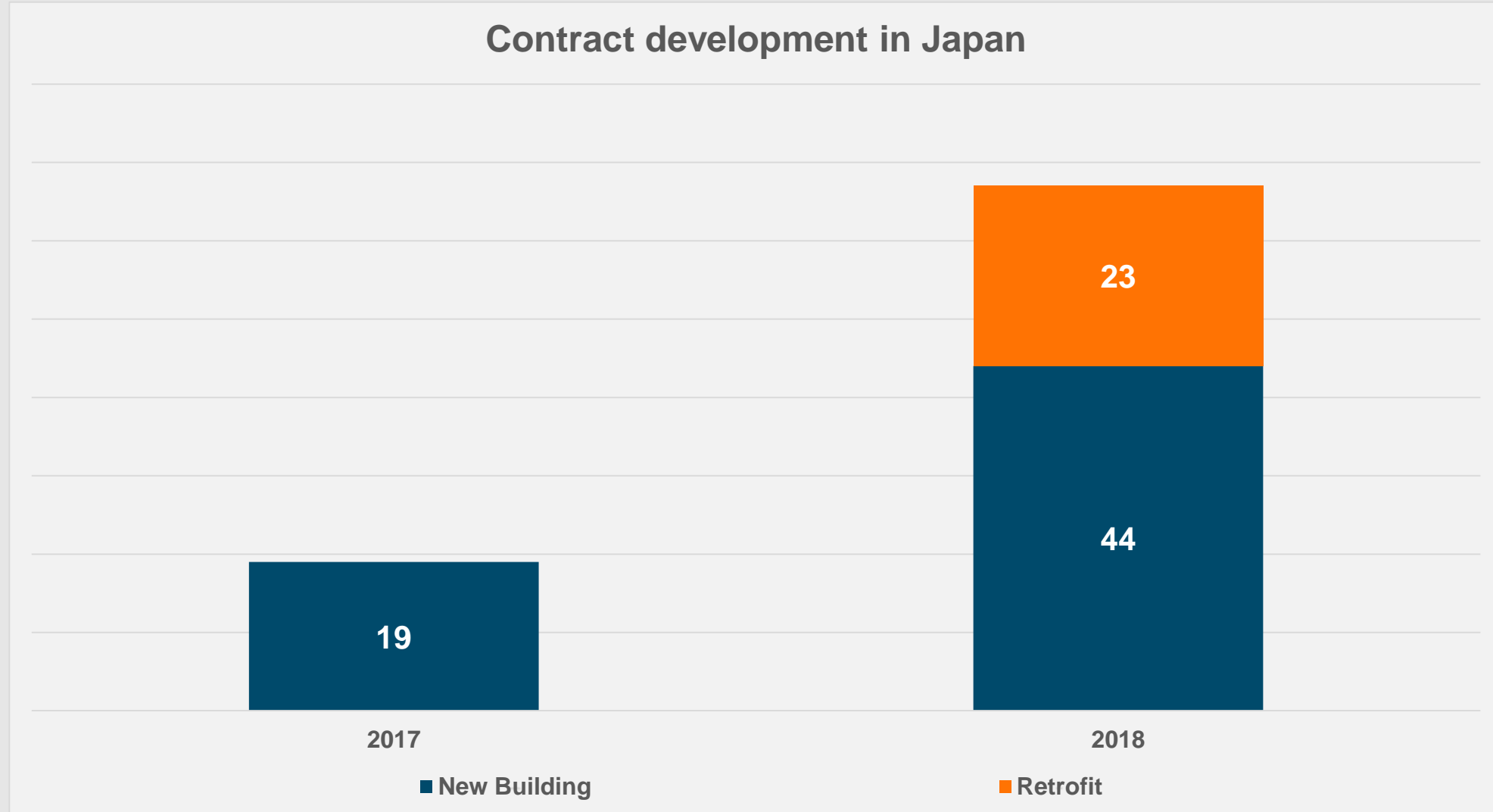
Retrofit/New build



~470 VESSELS
~620 SCRUBBERS

As of Sep. 2018

Market activity



As of Oct. 2018

Hankyu Ferry

- 16 300 GT Ferry vessel
- 6200 DWT
- 2 x 14V31 Wärtsilä engines
- Ship speed: 23.5 knots
- Passengers: 660
- Trucks: 275
- Car: 185
- **2 x 7 MW scrubber**
- **Hybrid I-SOx scrubber system**



Wärtsilä I-SOx

1 – 18MW



Wärtsilä V-SOx

1 – 20MW



Wärtsilä V-SOx multiple

1 – 35MW



Wärtsilä Q-SOx

40 – 70MW



System Arrangements

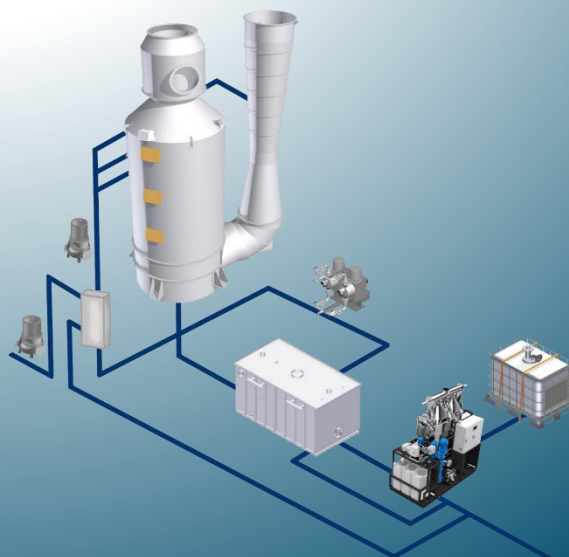
Open loop

Ships operating in waters with sufficient alkalinity and no restriction on discharge water.



Closed loop

Ships operating in low alkalinity waters or operating in zero discharge zones.



Hybrid

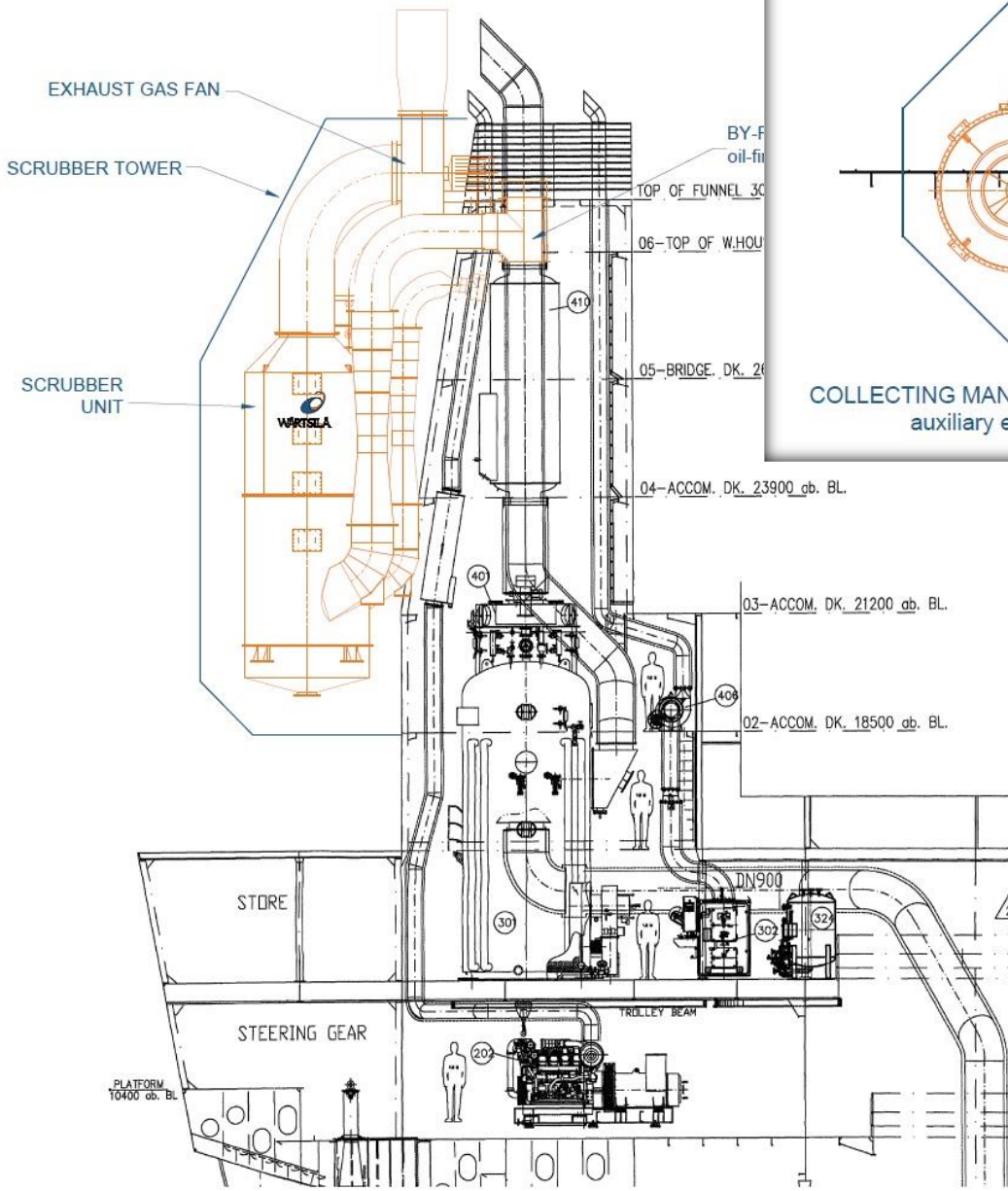
Ships operating in all types of waters or requiring full operation flexibility.



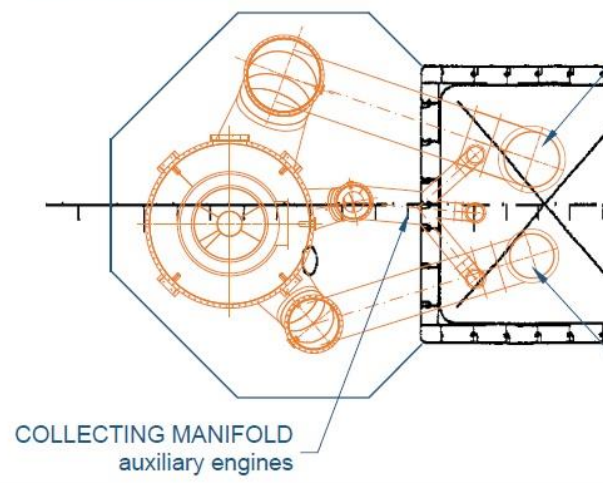
*WTS: Water Treatment system

LAYOUT STUDY: 17 000 DWT TANKER – 8 MW SCRUBBER

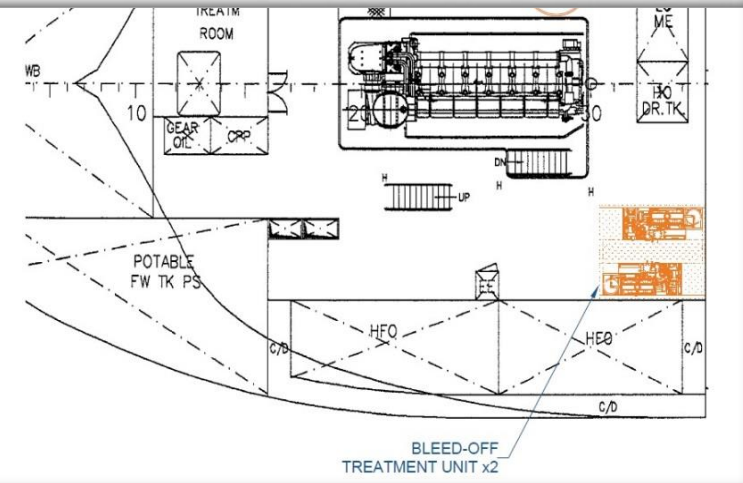
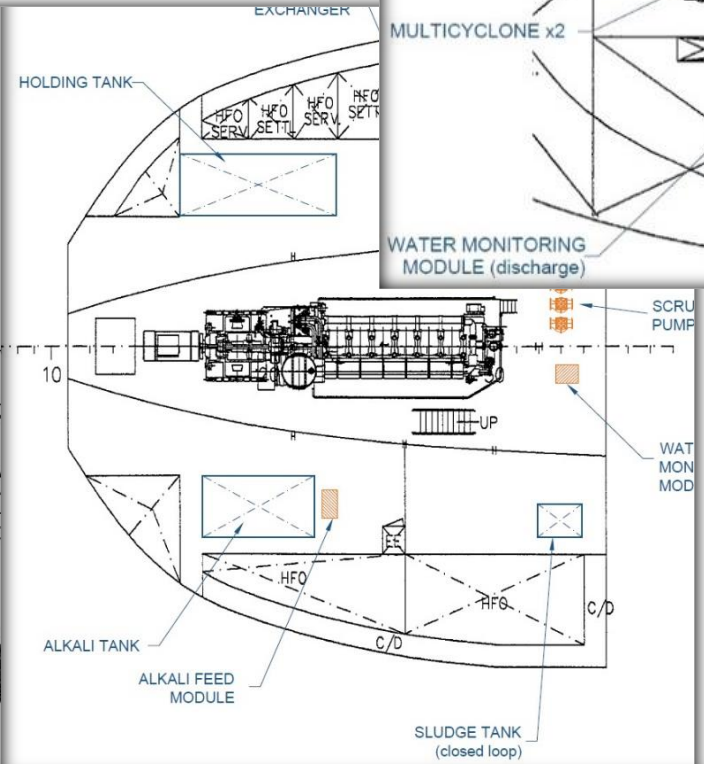
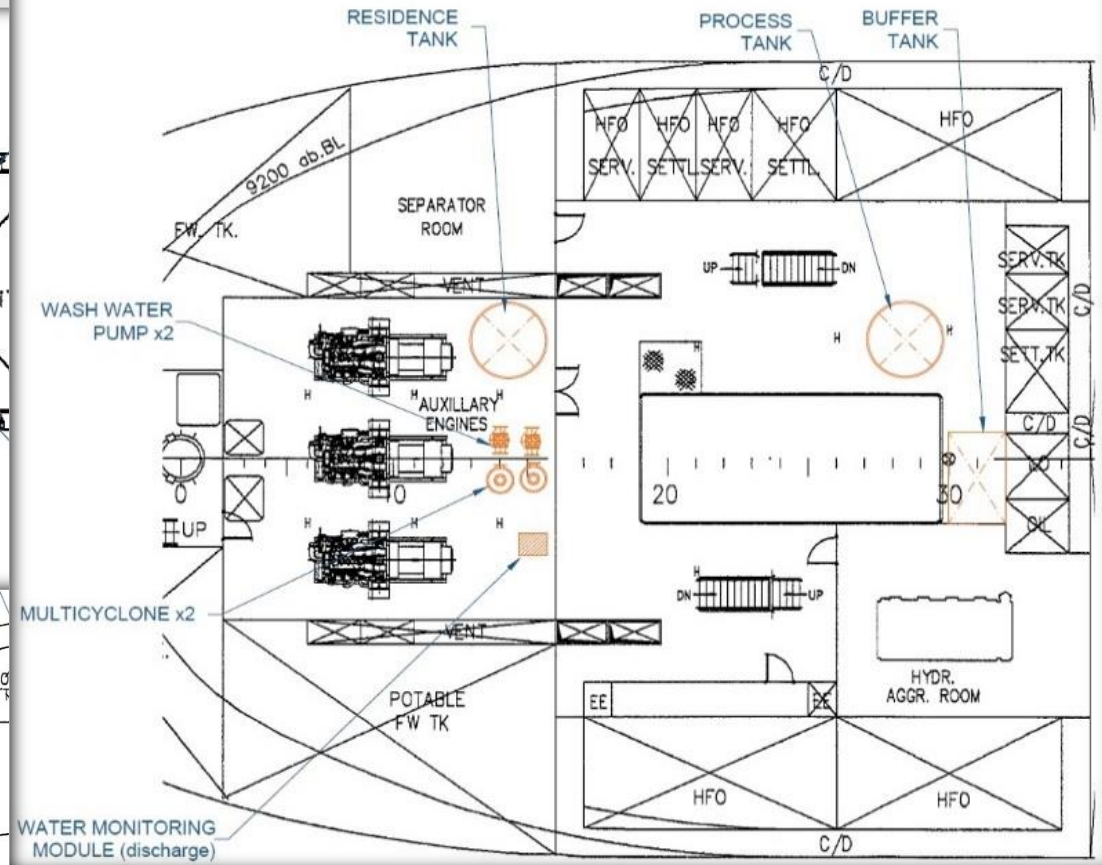
LONGITUDINAL SECTION



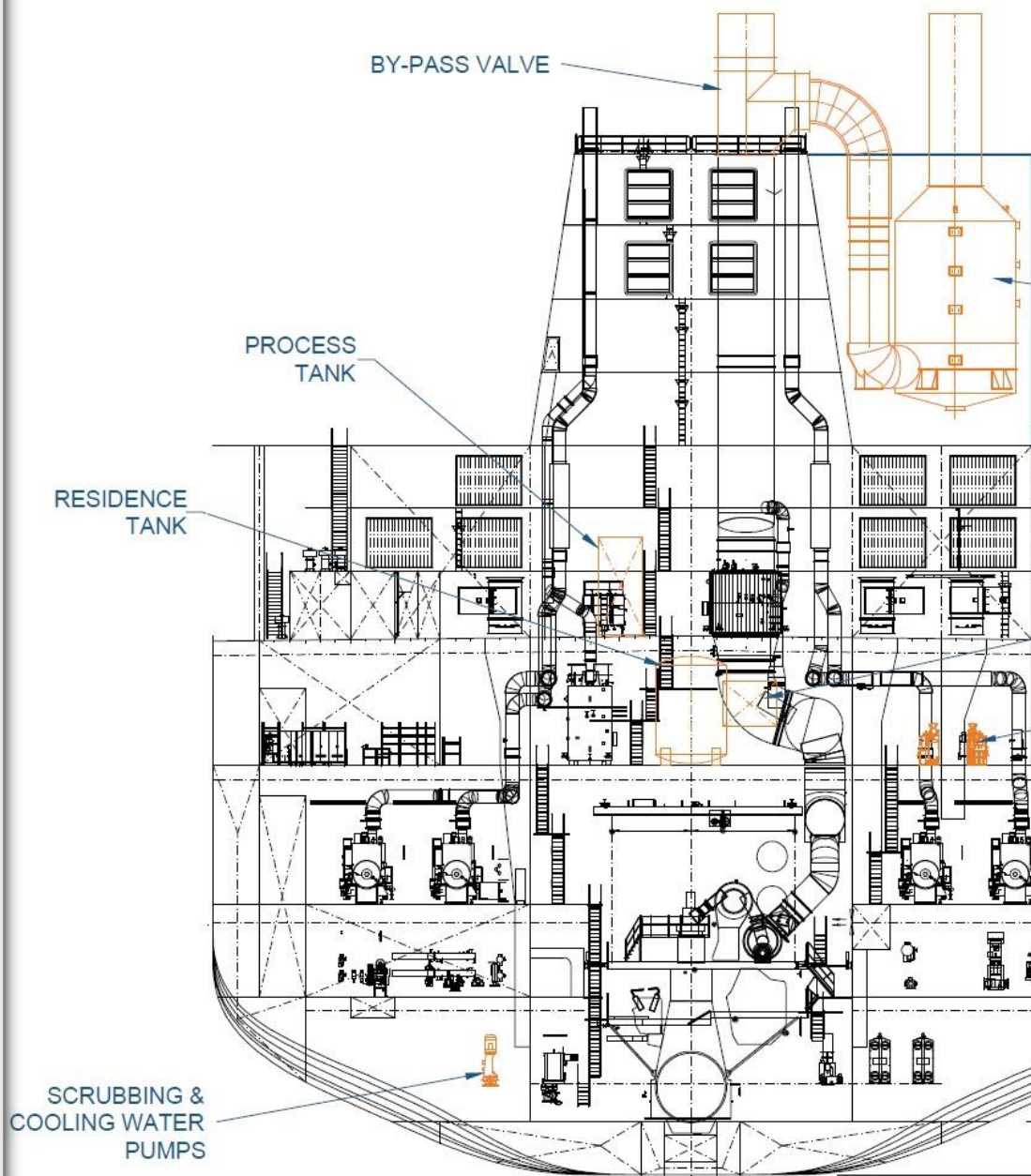
05 - BRIDGE DECK



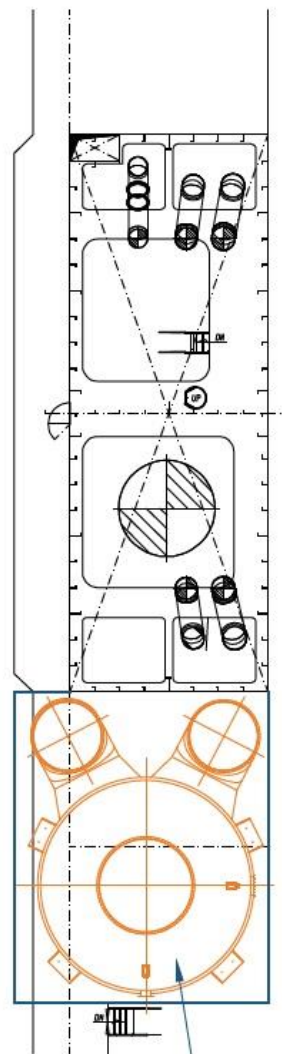
UPPER PLATFORM



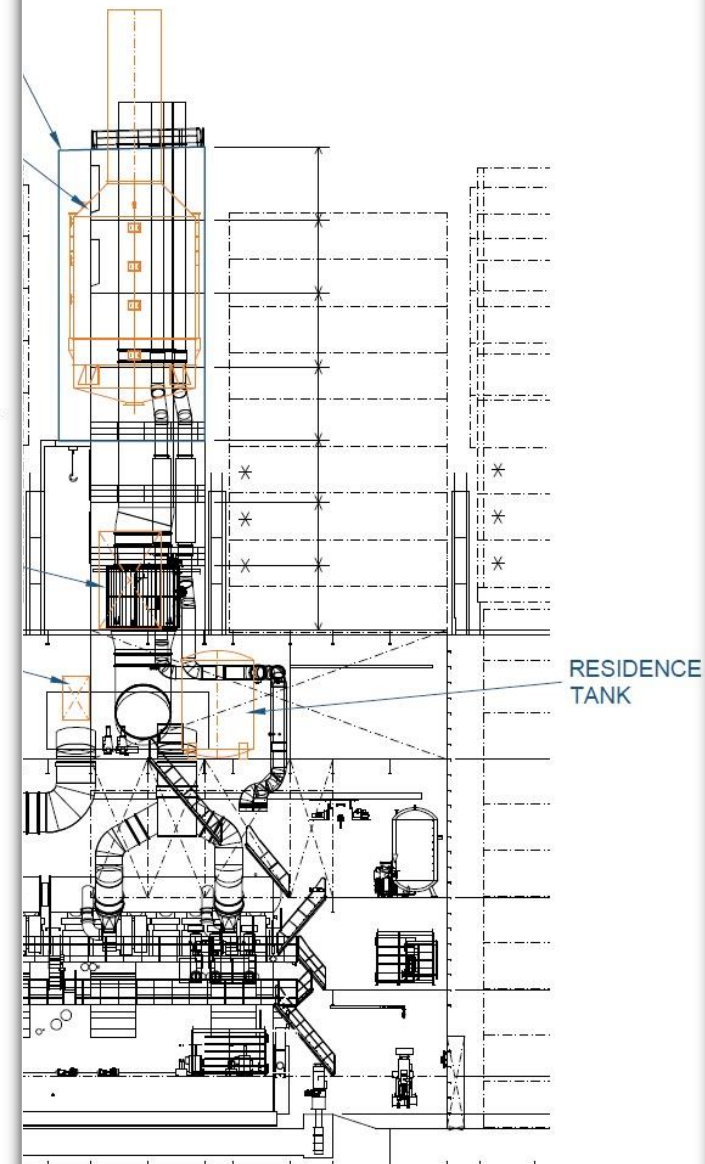
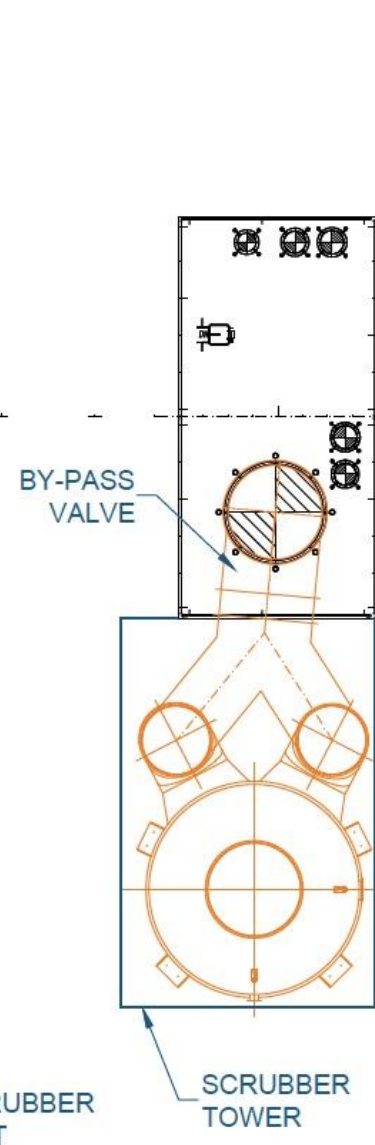
CROSS SECTION



CASING TOP



FUNNEL TOP



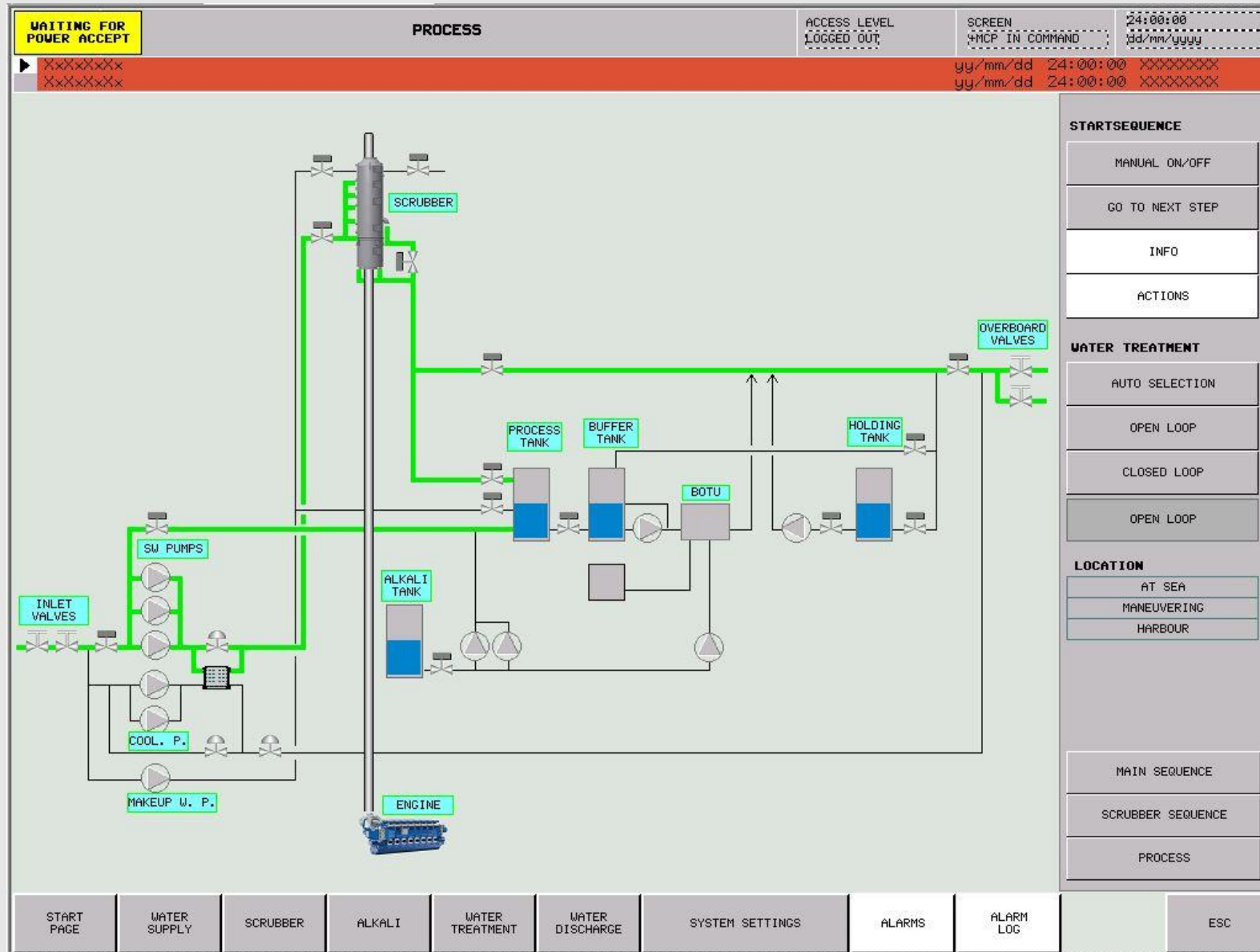




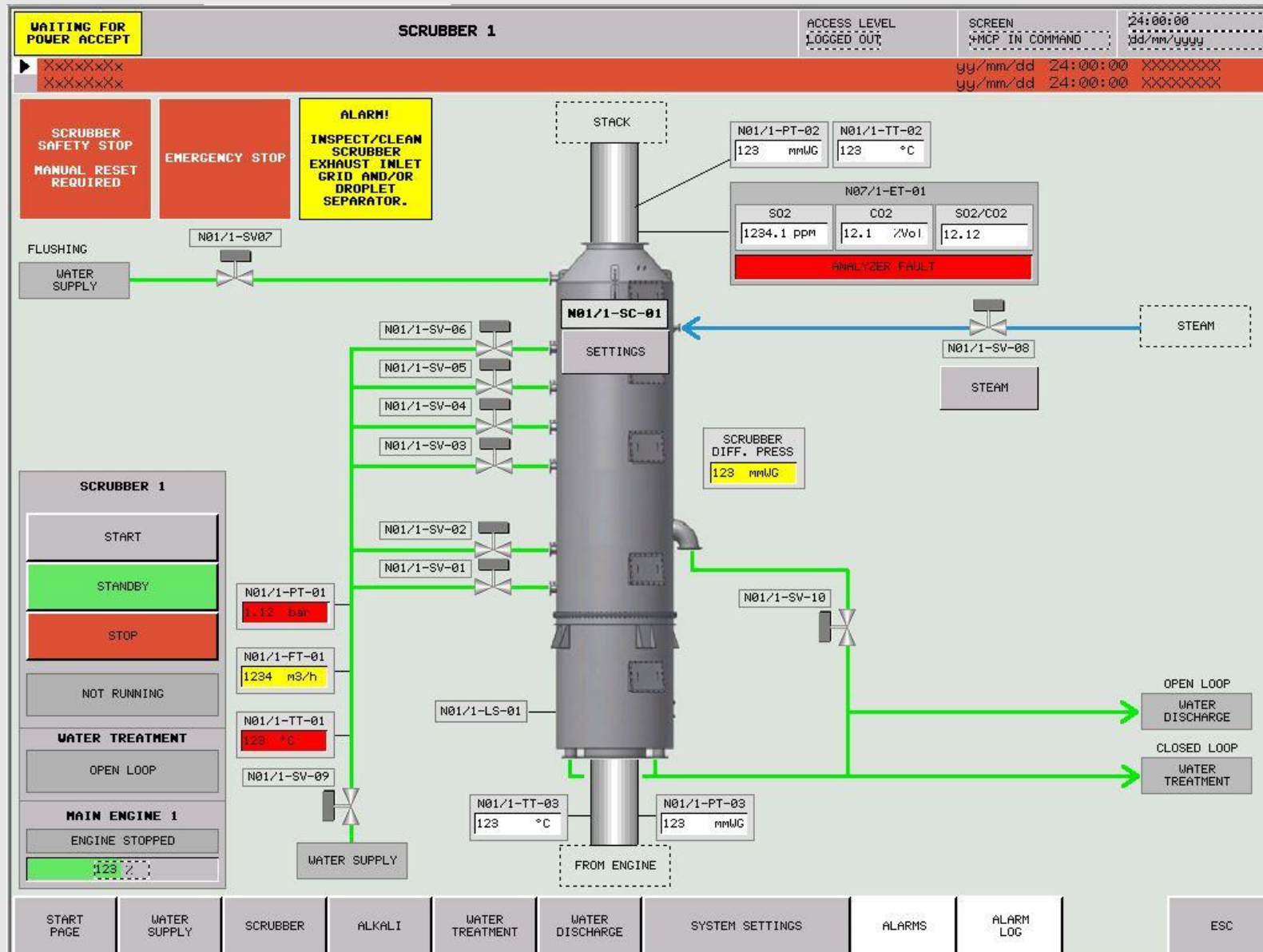




Control system



Control system



- Scrubbers are working
- Subsystems are working
 - CEMS
 - pH discharge
 - Sludge handling
- Knowledge is spreading
 - For suppliers, customers and stakeholders alike
 - Open loop/vs closed loop water discharge
- Operational experience
- Legislation improving
 - IMO guidelines
 - Temporary non-compliance

- Market development:
 - Global scope
 - Demand vs supply?
 - EGCS suppliers: newcomers vs establishment?
- Business case reborn:
 - Fuel prices?
 - Fuel qualities?
 - Fuel availability?
- Enforcement?
- New SECAs?

- Technology development:
 - Footprint
 - Energy consumption
 - Materials
 - Subsystems
 - Legislation
- New technologies
- Particulate matter
- LNG
- Hybrid propulsion
- GHG

