

Wärtsilä Smart Navi-Planner Marintec China 2019 – 3 Dec 2019

Barry Khoo – General Manager, Wärtsilä Voyage Shanghai

Transas (Wartsila Voyage Solutions) in the global organisation:



PEOPLE OFTEN THINK WE ARE JUST AN ENGINE COMPANY

No3 Renewables
Energy Solution
Integrator

Largest Energy
Storage Management
in the US

World's leading
Hybrid & Gas Engine
Integrator

300+ Vessel Traffic
Systems Installed
worldwide – Voyage
Solutions/**Transas**

More than 13, 000
Electronic Chart
Systems (ECDIS) –
Voyage
Solutions/**Transas**

More than 5500
marine simulators
installed – Voyage
Solutions/**Transas**

Guinness World
Record for Cleanest
Engine Technology

Installed Power
stations in 178
Countries

Leading the drive to
100% renewables
future

World's first
autodocking
installation
successfully tested
by us – SAM ADP

80% of cruise
vessels are
navigated by us –
Voyage
Solutions/**SAM**

1 in every 2.5 ships
is serviced by us

We have every
single component of
Autonomous
Shipping available
today

Leading marine
company In AI and
Machine Learning –
Voyage
Solutions/**Transas**

We are one of the
largest user of
Robotics Process
Automation in
Europe



VOYAGE SOLUTIONS WILL LEAD WÄRTSILÄ TO SHAPE OUT THE GLOBAL SMART MARINE ECOSYSTEM

WHY SMART MARINE???

Easter morning 1900: 5th Ave, New York City. Spot the automobile.



Source: US National Archives.

Easter morning 1913: 5th Ave, New York City. Spot the horse.



Source: George Grantham Bain Collection.

Many Buzz Words?!

DIGITALIZATION

IoT

MACHINE LEARNING

SELF DEEP LEARNING

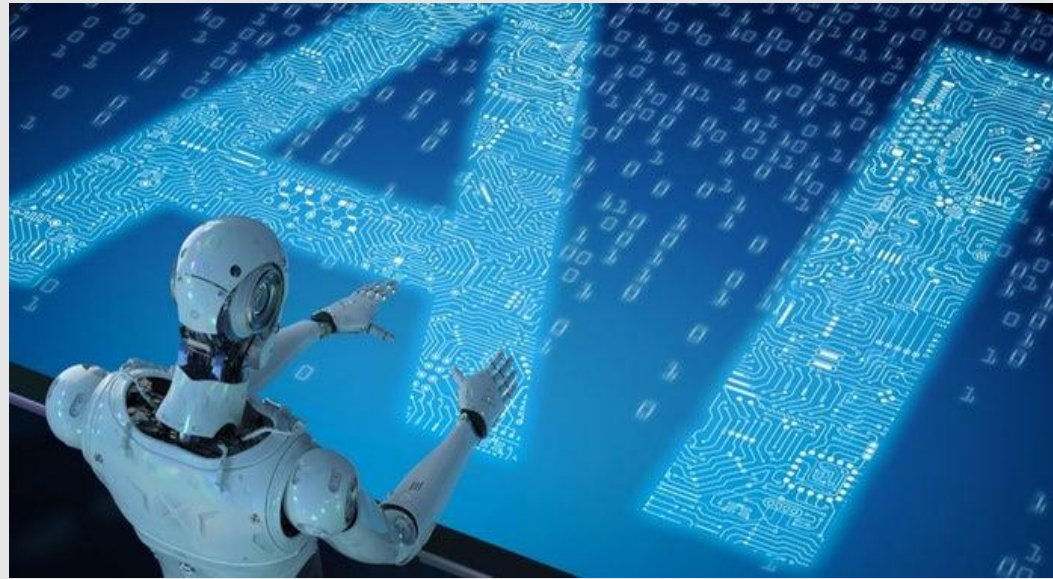
ARTIFICIAL INTELLIGENCE
(AI)

BIG DATA

CONNECTIVITY

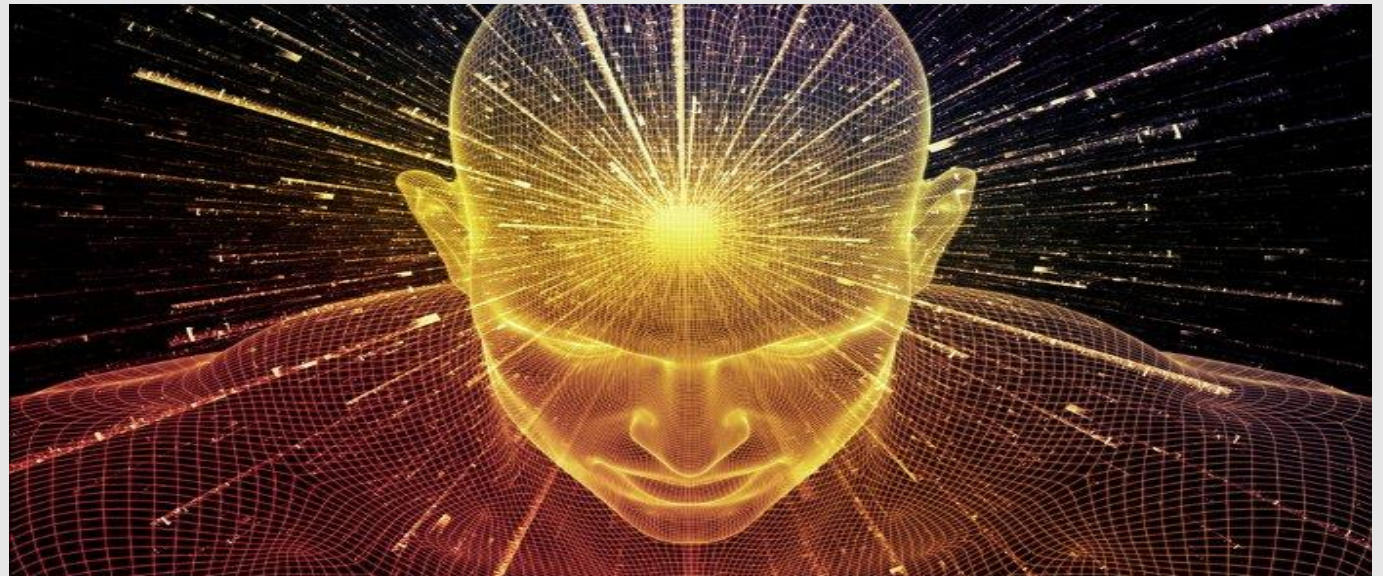
BLOCKCHAIN

智商 -
Intelligence



智能 – Smart (AI & Machine Learning)

智慧 – Wisdom



Fleet Operations Solutions

Wärtsilä Smart Navi-Planner



secure environment to make sure that the ship arrives to the destination point safely and in time.

Advanced software applications facilitate routine tasks and decrease the workload allowing people to focus on their main objectives.

1/3 of the world fleet (~13,000 ships) are already sailing with our Transas ECDIS

Fully integrated into our Fleet Operations Solution
What if we connect these?



- More computation power
- Always up to date and latest charts, publications and data
- Central data collection hub for onboard data
- Communication hub for other stakeholders (e.g. ports)



